



# EMBRACE THE FUTURE

Premium **3 BHK Residential Apartments**  
for an imperial living experience





AN IMPERIAL  
LIFESTYLE AWAITS YOU!





**Welcome to Imperial Apartments where every single cell of your body and all your senses comes alive with joy, comfort, security, hope and esteem.**



Great location and proximity to the residential and commercial hubs of Tricity makes Imperial Apartment the rational choice. The green surroundings delight your eyes and the fragrance of fresh air is food for your soul. Your ears hear the laughter of your family and your heart feels assured that you have made the right choice because of the security and safety arrangements. This is the place where you taste freedom from all worries. This is the place where you touch the zenith of ease and esteem.

The Imperial architecture is fragrant with luxury and a swanky lifestyle in the throbbing hub of activity promising a wholesome and delightful experience; thanks to the provision of all basic requirements within the complex. With superb infrastructure and high quality fittings and installations, it spells class every way. High speed lifts, advanced security, fire prevention measures, a club cum community space, adequate parking and visually appealing residential design compliment all the spaces that wrap around it.



HEAR THE JOY OF  
WORLD CLASS AMENITIES





Premium Club House | 60,000+ Sq Ft Green Area | 66 ft wide front Road  
Gymnasium | Kids Play Area | Yoga Centre | Table Tennis Room  
Multipurpose Hall | Pool Room | Terrace Swimming Pool with separate kids Pool Area  
24x7 Security | 65% Open Area | Stilt + Open Parking | 4 Entry Gates  
Fire Fighting Arrangement | 5 Rain Water Harvesting Wells

#AnImperialLife

# PLANNED TO PERFECTION

- |                      |                              |
|----------------------|------------------------------|
| 1 Main Entry         | 12 Scented Garden            |
| 2 Exit               | 13 Outdoor Gym               |
| 3 Drop-off           | 14 Kids Play Area            |
| 4 Shopping Promenade | 15 Cultural Court/ Oat       |
| 5 Surface Parking    | 16 Entry to the Central Park |
| 6 Obelisk            | 17 Green Area                |
| 7 Entry Plaza        | 18 Club Deck                 |
| 8 Boulevard          | 19 Barbecue Zone             |
| 9 Gazebo             | 20 Clue House                |
| 10 Basketball Court  | 21 Swimming Pool             |
| 11 Speaking Tree     | 22 Water Bodies              |





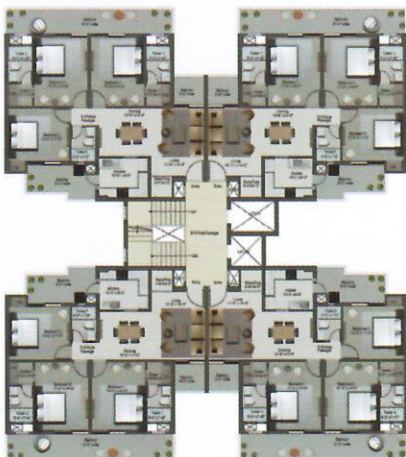
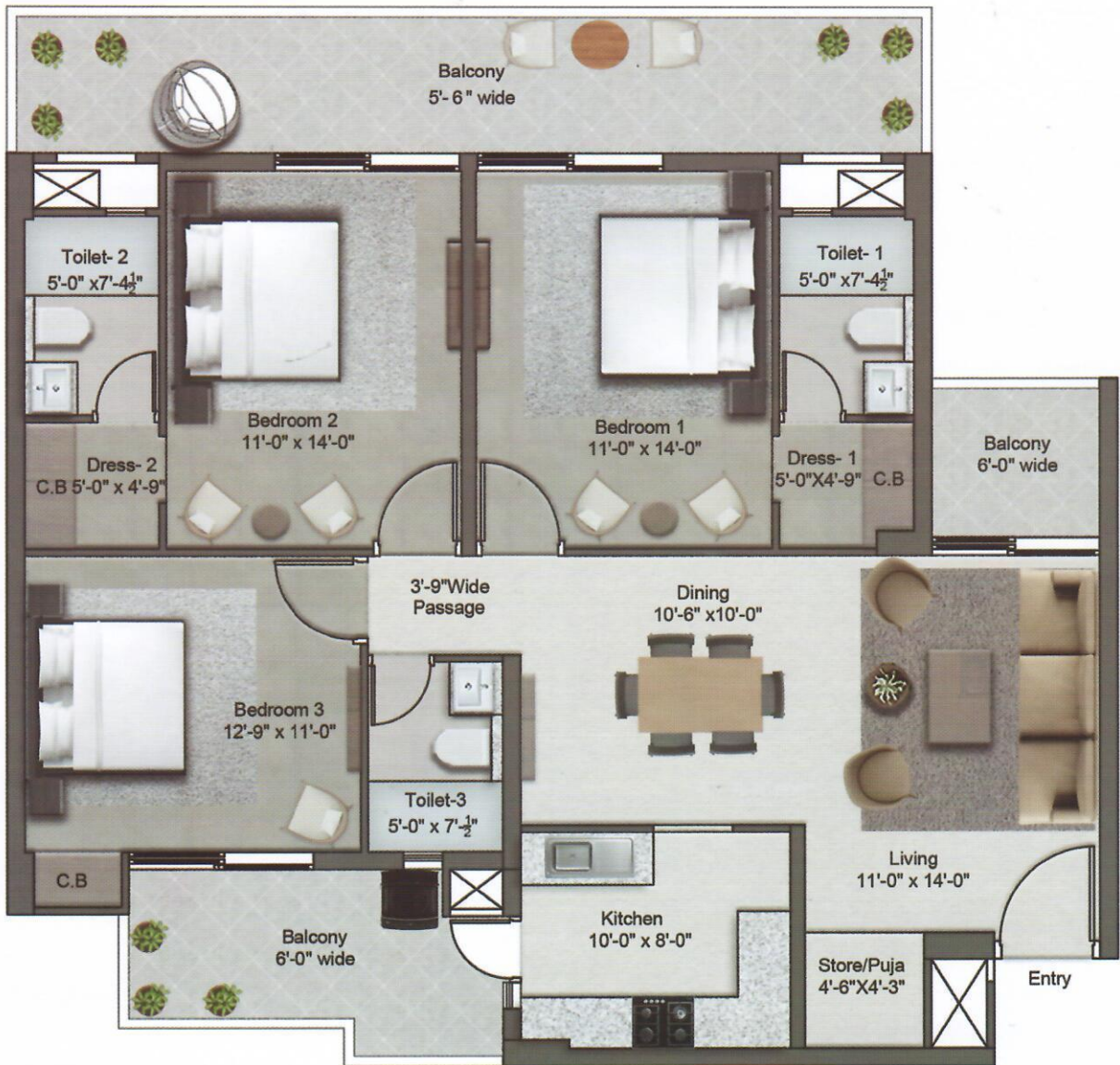
6000 MIA WIDE ROAD





# 3 BHK UNIT PLAN

S+14 HIGH RISE (276 UNITS)



**CLUSTER PLAN**

**Covered Area**  
1155 Sq Ft.

**Balcony Area**  
322 Sq Ft.

**Super Area**  
1800 Sq Ft.



# TECHNICAL SPECIFICATIONS

## S+14 HIGH RISE (276 UNITS)



### STRUCTURE

Maivan Structure  
RCC Earthquake Resistant Raft Footing Structure  
Vetted from IIT Roorkee



### LIVING/DINNING

Doors : Flush Doors/Skin Doors with enamel Mat Finish  
Flooring : Vitrified Tiles 32\*64  
Walls : Acrylic Emulsion Paint Finish  
External window Glazing : UPVC with Toughened Glass  
Switches : L&T Modular Switches & MCB  
Other : PVC Provision for Split AC  
Ceiling : POP Cornice



### BEDROOMS

Doors : Flush Doors/Skin Doors with enamel Mat Finish  
Flooring : Vitrified Tiles 32\*64  
Walls : Acrylic Emulsion Paint Finish  
External Window Glazing : UPVC with Toughened Glass  
Wardrobes : Ply with Sunmica  
Switches : L&T Modular Switches & MCB  
Other : PVC Provision for Split AC  
Ceiling : POP Cornice



### WASHROOMS

Doors : Flush Doors/Skin Doors with enamel Mat Finish  
Flooring : Anti-skid Tiles of Premium quality 12\*12  
Walls : Premium tiles Size 12\*24  
Chinaware : Jaguar/Kohler/Grohe/Cysterns/ Geberit  
Ceiling : Gypsum False Ceiling with (T) sections



### MODULAR KITCHEN

Flooring : Premium quality Vitrified Tiles  
Walls : Premium quality Tiles 2FT above counter  
External window Glazing : UPVC with Toughened reflected Glass  
Wardrobes : Semi Modular Kitchen with Double Bowl Sink  
Other : Granite Counter Slab



### STAIRCASE/ COMMON CORRIDORS

Flooring : Granite/Tiles Subject to availability  
Walls : Acrylic Emulsion Paint Finish  
Other : SS Railing



### BALCONIES

Flooring : Anti-skid Tiles 12\*12  
Other : MS Railing

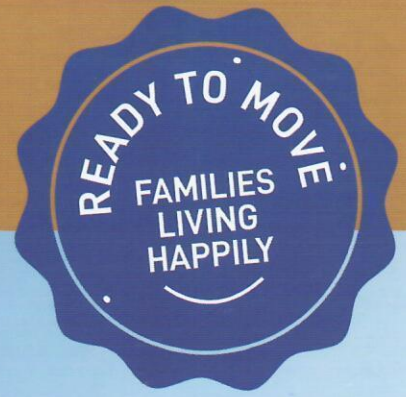


### LIFTS

Two lifts in each tower



S+4 FLOORS





# TRUST & CREDIBILITY AT IT'S BEST

Developed under the aegis of Harmony Colonizers pvt. Ltd, Imperial Apartments resonates with its mark of quality and value for money. It is a RERA registered and certified Real Estate Company with presence all over North India. It has in its kitty townships, residential apartments and other premium projects.

Imperial Apartments is an esteemed investment given its appropriate location and well appointed apartments, both as residential space and to benefit from fast growing returns. The project and the company is a well- reckoned success story in itself and if you choose to be a prime mover, your testimony as a satisfied and happy customer will inspire thousands of families who aspire to live a dream life marked with luxurious amenities and functional features.

Imperial Apartments is an elevation for your status and lifestyle!

- Brand Values
- Premium Investment for years to come

## ABOUT HARMONY COLONISERS PRIVATE LIMITED

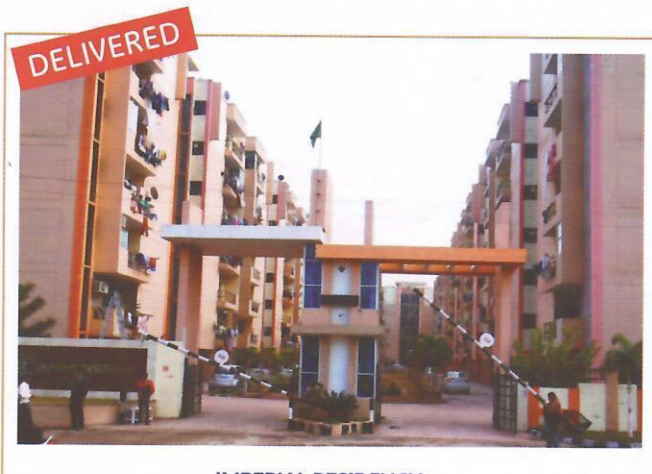
Harmony Colonisers (P) Ltd. was Incorporated under the companies Act 1965, ROC vide Registration No U70102PB2007PTC030793 dated 4th Jan, 2007. Somsons Colonizers Limited has been our associate company. Both of the companies developed and constructed a reputed and magnificent project namely imperial residency at Peer Muchalla, Distt. Mohali.

The Project brought big fame for being completed within stipulated time as per the commitment, quality and expectations of our prestigious customers. The Imperial Apartments is also being developed in association with somsons colonizers limited. The land of the project is completely owned by the company.

## ABOUT SOMSONS INFRA LIMITED

Somsons Infra Limited, A company with passionate and persistent approach for creating wonderful and lively infrastructure and projects that enhance to the beauty of life. You can be assured that with our experience in real estate sector, we will exceed your expectations every time ! no deadline is too tight, no budget is too modest.

Every project is a dream project for us. We have been in the field of Colonization from the last 26 years, having a number of successful projects in various cities of Punjab. Each project is a master piece in itself. We stand by and are known for our commitment, quality and customer's satisfaction.

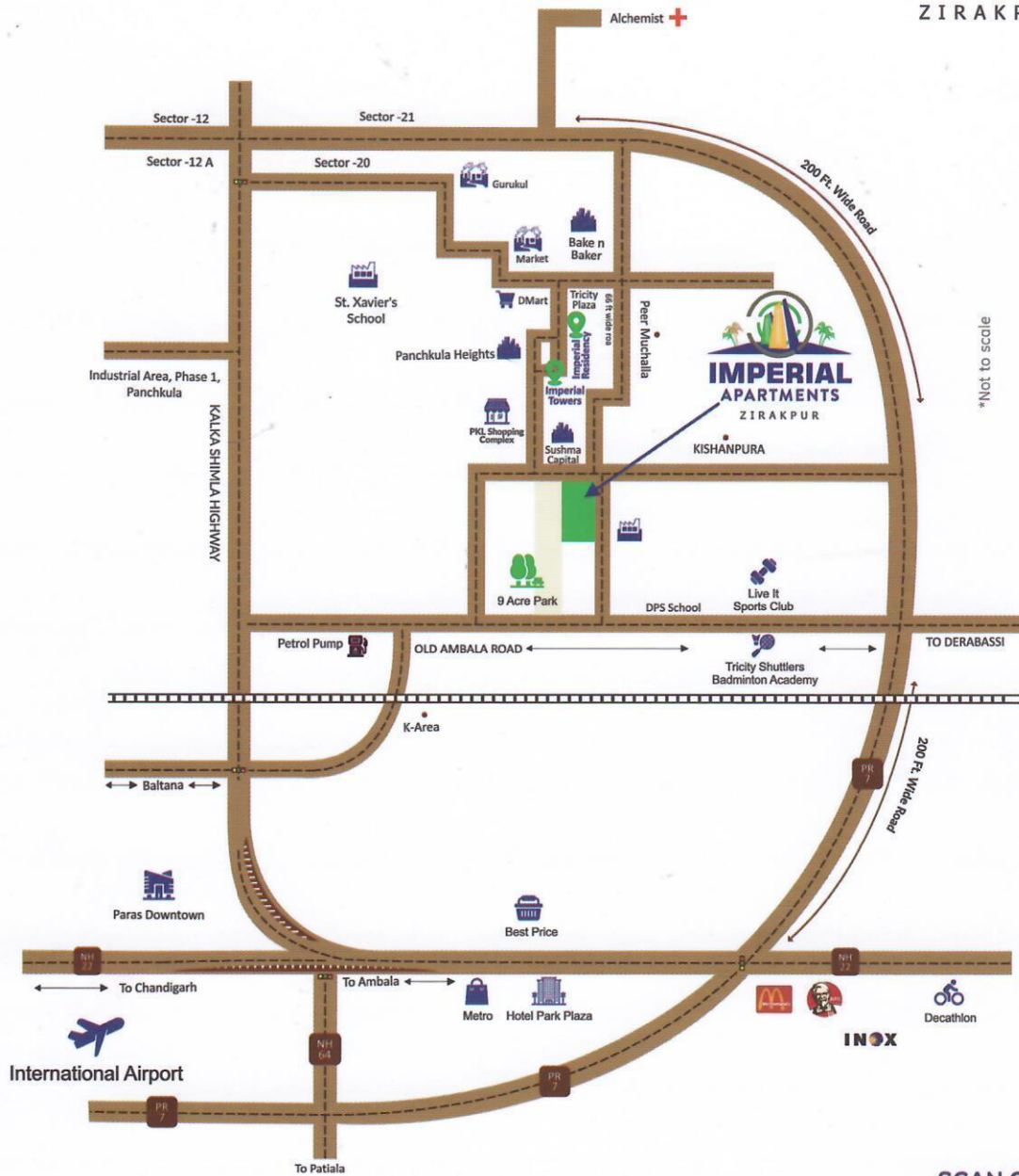


IMPERIAL RESIDENCY



IMPERIAL TOWER

# FEEL CONNECTED WITH THE WORLD



SCAN QR FOR LOCATION



## TIME STONES

DPS World School - 01 mns | Zirakpur Bus Stand - 10 mns | Alchemist Hospital - 07 mns  
 St. Javiers School - 02 mns | Panchkula Golf Club - 10 mns | Chandigarh Airport - 25 mns  
 Sector 20 Market - 02 mns | Paros Hospital - 15 mns | Chandigarh Railway Stand - 20 mns

Site Office: Kishanpura Road,  
 Opposite Sushma Capital Mall,  
 Adjoining Dhakoli, Zirakpur (Punjab)

W : [www.imperialapartments.co.in](http://www.imperialapartments.co.in)

E: [sales@imperialapartments.co.in](mailto:sales@imperialapartments.co.in)

Follow us on:  



A Project by Harmony Colonizers Pvt. Limited  
 (Venture of SOMSONS Infra Limited)